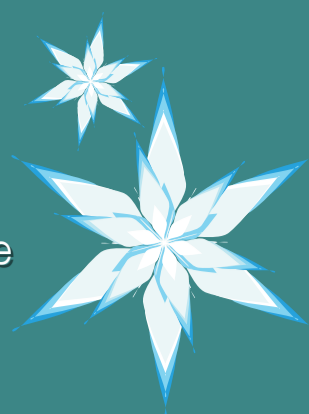


A Visual Guide to Winter in America



Each year, an average of **105** snow-producing storms affect the continental United States. A typical storm will have a snow-producing lifetime of two to five days and will bring snow to portions of several states.

Heavy snow can immobilize a region and paralyze a city, stranding commuters, closing airports, stopping the flow of supplies, and disrupting emergency and medical services. Accumulations of snow can cause roofs to collapse and knock down trees and power lines.



Of the continental states, the **coldest** states throughout winter are **North Dakota, Minnesota & Maine**

In America, winter temperatures average **32°F**

Washington has the **greatest** average annual **snowfall**, averaging **676 inches** of snowfall a year.

The average **snow shovel** can move **16 lbs** of snow

A shovel loaded with heavy, wet snow **12 times a minute**

is **equal to** moving

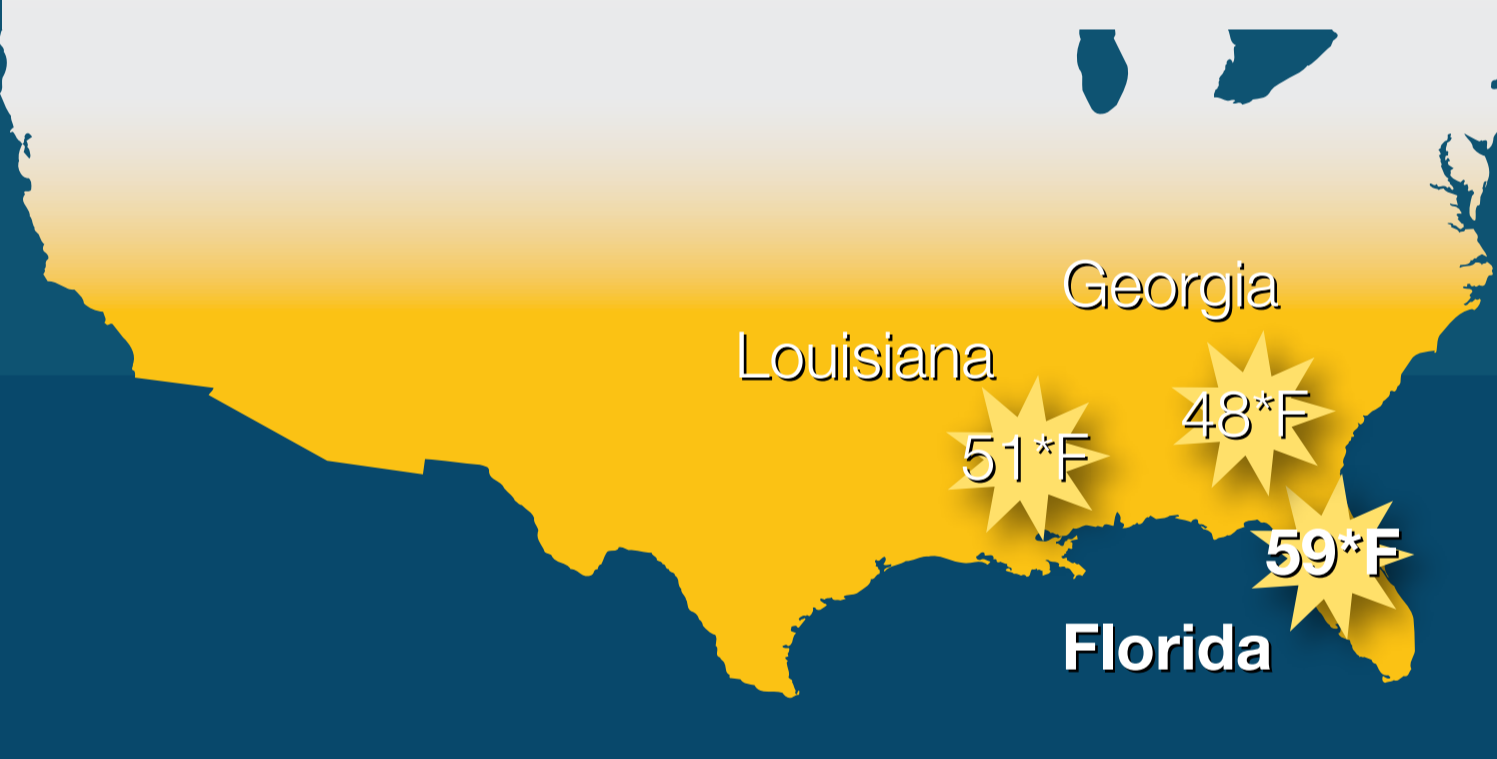
192 lbs of snow



If each household within the three **coldest states** shoveled snow for **10 minutes a day**, approximately

4,000,000,000 lbs

of snow would be moved in **one day**



Of the continental states, The **warmest** states throughout winter are **Florida, Louisiana & Georgia**

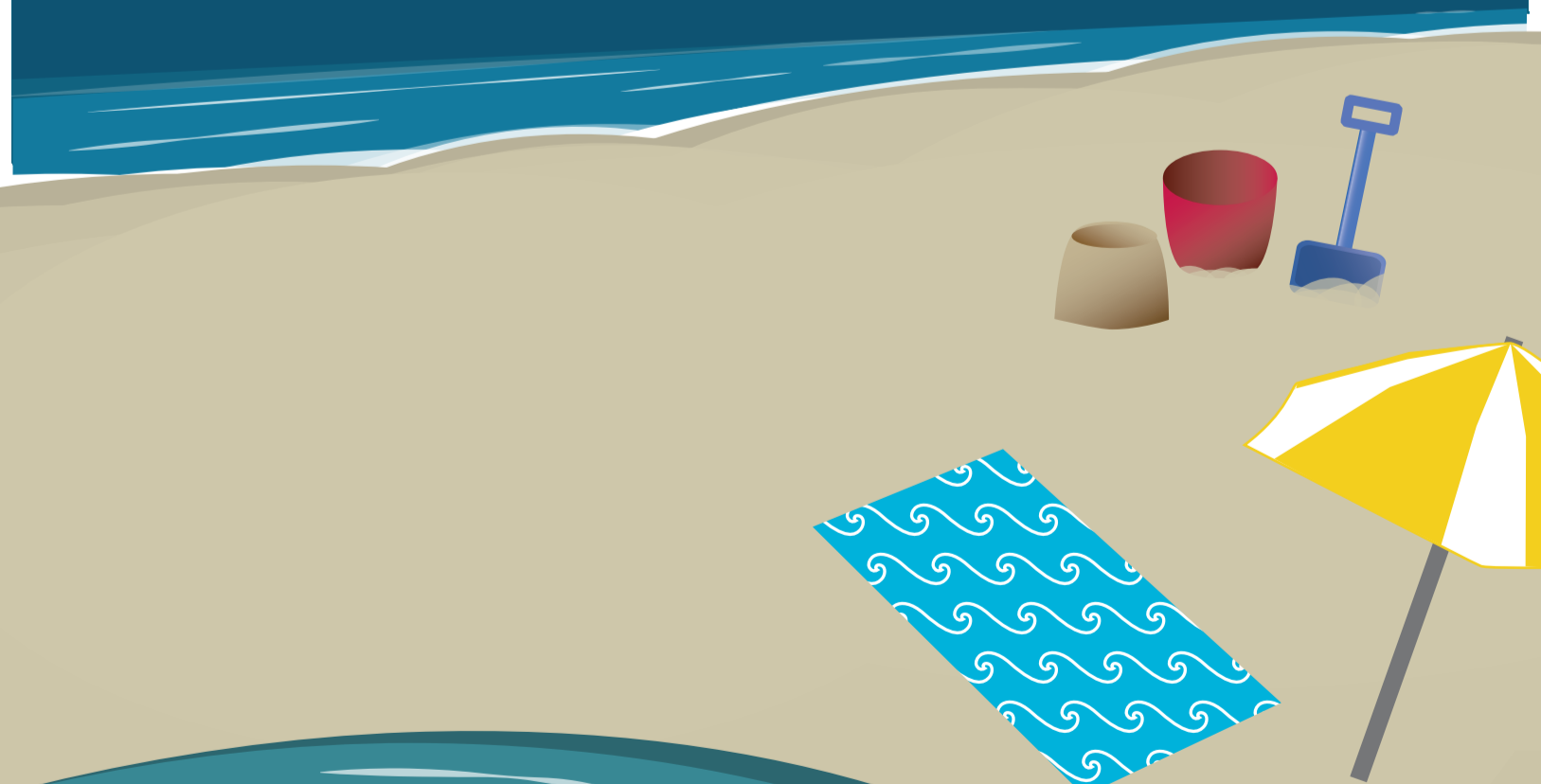
768 days

the number of most sunny days in a row, a world record held by

St. Petersburg, Florida



Florida's nickname is the "**Sunshine State**" as it averages **300 days** of full **sunshine** each year.



Sources:

- <http://nsidc.org/snow/facts.html>
- http://www.nws.noaa.gov/os/winter/resources/Winter_Storms2008.pdf
- <http://www.currentresults.com/Weather-Extremes/US/snowiest.php>
- <http://www.currentresults.com/Weather-Extremes/US/sunniest.php>
- <http://www.currentresults.com/Weather/US/average-state-temperatures-in-winter.php>
- <http://www.currentresults.com/Weather-Extremes/US/coldest-cities-winter.php>
- <http://www.worldatlas.com/webimage/countrys/namerica/usstates/flweather.htm>
- <http://www.midwestheart.com/resources/education/patient-education/exercise/snow-shoveling>
- <http://www.census.gov/hhes/www/housing/census/historic/units.html>